

Our metallographers primarily provide support for quality assurance or on processing issues. Using state-of-the-art reflected light and transmitted light microscopy to examine polished sections and mountings, the microstructure, grain size or defects and inclusions can be characterised. Our well equipped experts are also able to provide on-site, non-destructive evaluation. Additional metallographic services range from hardness measurement to the determination of remaining cyclic life.

**Solving complex problems**

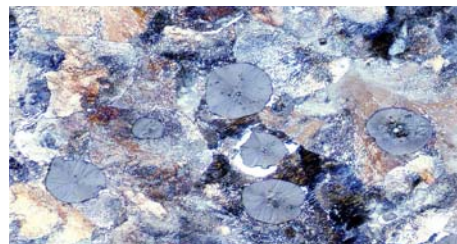
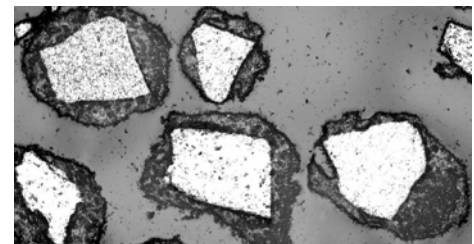
- Failure analysis
- Consultancy for processing related issues
- Characterisation of materials and coatings
- Cyclic life assessment on high temperature materials
- Metallographic inspection of components
- Evaluation of heat treatments
- Support in optimisation

*Defekte Schweissnaht in einer Hubstange***Quality assurance**

- Monitoring of manufacturing output
- Qualification of welded joints
- (Macro)structure, Microstructure
- Quantitative characterisation of microstructural components
- On-site Metallography

*High resolution light microscopy and state-of-the-art image analysis***Methods of preparation**

- Section preparation of small parts and thin coatings
- Expertise in effective etching
- State-of-the-art microscopy and photography
- Hardness, microhardness and universal hardness
- Various replication techniques

*Microstructure of spheroidal cast iron**SIC/Al<sub>2</sub>O<sub>3</sub> thermal spray powder***We test for you- why not try us?**

We can conduct even complex investigations and analyses both on-site and in our laboratories – rapidly, affordably and professionally

**Delivery**

The results of metallographic characterisation can usually be delivered within 2-3 working days.